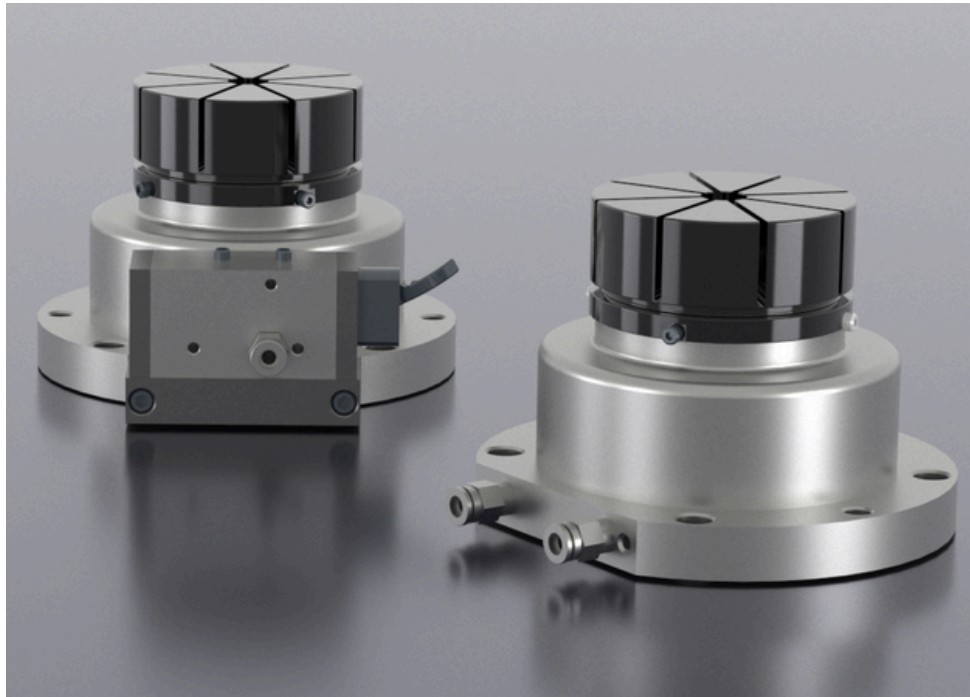


EXTERNAL FIXTURE



VSE-9598-B

以氣壓為動力，透過夾具包覆的方式固定部件。

可加裝氣壓開關或連接氣壓管。

夾持力 1700/Kgf (16.6kN)

加工範圍 20~85mm

Powered by pneumatic pressure, the fixture secures components through an enclosing clamping mechanism.

A pneumatic switch can be installed, or an air pressure hose can be connected.

Clamping force: 1700 Kgf (16.6 kN)

Machining range: 20–85 mm

