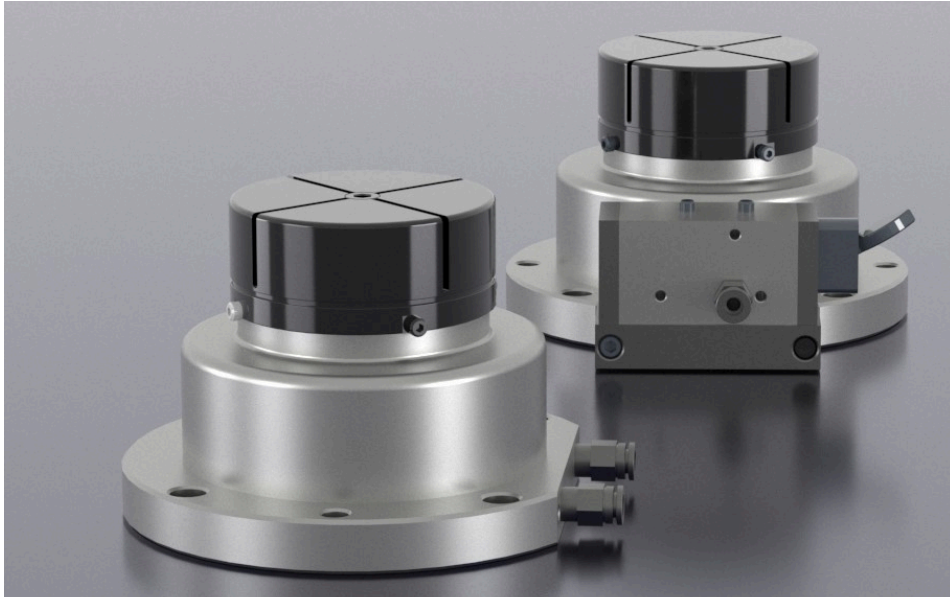


## INTERNAL SUPPORT FIXTURE



### VSE-9598-O

以氣壓為動力，透過夾具將部件夾持固定。

可加裝氣壓開關或連接氣壓管。

夾持力 1700/Kgf (16.6kN)

加工範圍 15~85mm

Powered by pneumatic pressure, the fixture securely clamps and holds the component in place.

A pneumatic switch can be installed, or an air pressure hose can be connected.

Clamping force: 1700 Kgf (16.6 kN)

Machining range: 15–85 mm

